

**GUADALAJARA IMPRESCINDIBLE**  
**ESSENTIAL GUADALAJARA**



Para visitas rápidas, el viajero no debe perderse los siguientes monumentos, que le darán una idea acertada del patrimonio histórico de la ciudad:

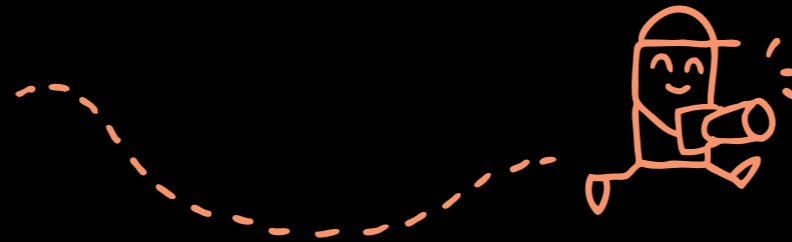
For a short tour of the city the visitor should try not to miss the following monuments, which will give the visitor an accurate idea of the rich heritage of the city:

- Torreón de Álvar Fáñez
- Palacio del Infantado
- Iglesia de Santiago
- Convento de la Piedad
- Palacio de la Cotilla y Salón Chino
- Capilla de Luis de Lucena
- Concatedral de Santa María
- Torreón del Alamín
- Iglesia y Cripta de San Francisco
- Panteón de la condesa de la Vega del Pozo y Fundación
- Museo Francisco Sobrino

- Tower of Álvar Fáñez
- Palace of El Infantado
- Church of Santiago
- Convent of La Piedad
- Palace of La Cotilla and Chinese Room
- Chapel of Luis de Lucena
- Co-cathedral of Santa María
- Tower of El Alamin
- Church and Crypt of San Francisco
- Foundation of the Countess of La Vega del Pozo
- Francisco Sobrino Museum

Para finalizar, los parques de la Concordia y de San Roque invitan a un paseo agradable y a un momento de desconexión tras una jornada agotadora.

To end, la Concordia and San Roque Parks invite the visitor to enjoy a stroll and a moment of peace and quiet at the end of a busy day.



# Guadalajara

## Turismo Guadalajara

Oficina Municipal de Turismo

📍 Plaza del Concejo, 11

☎ 949 887 099

🌐 [www.guadalajara.es](http://www.guadalajara.es)

📷 @guadalajaramuchopordescubrir

👤 @TurismoenGuadalajara



**Guadalajara**  
Mil historias



AYUNTAMIENTO  
DE GUADALAJARA

[www.guadalajara.es](http://www.guadalajara.es)

# Gua da la ja ra

## HORARIOS DE APERTURA OPENING HOURS



### Torreones de Álvar Fáñez y del Alamín, capilla de Luis de Lucena, palacio de la Cotilla

Viernes, sábados, domingos y festivos, de 10,30 a 14h. Viernes y sábados, además, de 16,30 a 18,30h. (invierno); de 17 a 19h. (verano)

Entrada: 1 euro; monumentos incluidos en la Guadalajara Card

### Iglesia de San Francisco y Cripta

Viernes, sábados, domingos y festivos, de 10,30 a 14h. Viernes y sábados, además, de 15,30 a 17,30h. (invierno); de 17 a 19h. (verano)

Entrada: 1 euro (Cripta); monumento incluido en la Guadalajara Card  
Entrada libre a la iglesia

### Convento de la Piedad

Sábados, domingos y festivos, de 10,30 a 14h. Sábados, de 16,30 a 18,30h. (invierno); de 17 a 19h. (verano)  
Entrada libre

### Museo Francisco Sobrino

Martes, sábados, domingos y festivos, de 9,30 a 13,30h.  
Miércoles, jueves, viernes y sábados, de 16,30 a 20,30h.  
Entrada libre

### Convento de San José

Lunes a domingos, de 7,30 a 10,30h.  
Para peregrinaciones y grupos previa cita, 679 141 667  
Entrada libre

### Iglesia de San Nicolás

Lunes a domingos, de 10 a 13h. y de 17 a 20h.  
Entrada libre

### Concatedral de Santa María

Lunes a domingos, de 8 a 14h. y de 18 a 20h.  
Entrada libre

### Towers of Álvar Fáñez and of El Alamín, Chapel of Luis de Lucena, Palace of La Cotilla

Fridays, Saturdays, Sundays and Public Holidays, from 10.30 am to 2 pm. In addition, Fridays and Saturdays, from 4.30 pm to 6.30 pm (winter); from 5 pm to 7 pm (summer)

Ticket: 1 euro; monuments included in the Guadalajara Card

### Church and Crypt of San Francisco

Fridays, Saturdays, Sundays and Public Holidays, from 10.30 am to 2 pm. In addition, Fridays and Saturdays, from 3.30 pm to 5.30 pm (winter); from 5 pm to 7 pm (summer)

Ticket: 1 euro (visit to the Crypt); monument included in the Guadalajara Card  
Free entry to the Church

### Convent of La Piedad

Saturdays, Sundays and Public Holidays, from 10.30 am to 2 pm. Saturdays, from 4.30 pm to 6.30 pm (winter); from 5 pm to 7 pm (summer)  
Free entry

### Francisco Sobrino Museum

Tuesdays, Saturdays, Sundays and Public Holidays, from 9.30 am to 1.30 pm  
Wednesdays, Thursdays, Fridays and Saturdays, from 4.30 pm to 8.30 pm  
Free entry

### Convent of San José

Mondays to Sundays, from 7.30 am to 10.30 am. For pilgrimages and groups, please call 679 141 667  
Free entry

### Church of San Nicolás

Mondays to Sundays, from 10 am to 1 pm and from 5 pm to 8 pm  
Free entry

### Co-cathedral of Santa María

Mondays to Sundays, from 8 am to 2 pm and from 6 pm to 8 pm  
Free entry

### Palacio de Dávalos

Lunes a viernes, de 8,30 a 21h.  
Sábados, de 9 a 17h.  
Entrada libre

### Palacio del Infantado y Museo de Guadalajara

Martes a sábados, de 10 a 14h y de 16 a 19h.  
Domingos, de 10 a 14h.

Del 15 de junio al 15 de septiembre permanecerá cerrado por las tardes

Entrada libre

### Panteón de la condesa de la Vega del Pozo

Martes a jueves, de 10,30 a 12,30h.; de 15,30 a 17,30h. (invierno) y de 17,30 a 19,30h. (verano)  
Viernes, sábados, domingos y festivos, de 10,30 a 14h.  
Viernes y sábados, de 15,30 a 17,30h. (invierno) y de 17 a 19h. (verano)

Cerrado durante el mes de agosto.  
Entrada: 3 euros; miércoles gratuito sin explicación

### Zoo Municipal

Martes a domingo, de 11,30 a 19,30h.

Entrada libre

### Palace of Dávalos

Mondays to Fridays, from 8.30 am to 9 pm  
Saturdays, from 9 am to 5 pm  
Free entry

### Palace of El Infantado and Guadalajara Museum

Tuesdays to Saturdays, from 10 am to 2 pm and from 4 pm to 7 pm.  
Sundays, from 10 am to 2 pm.

The Museum will remain closed in the afternoons from the 15th of June to the 15th of September  
Free entry

### Mausoleum of the Countess of La Vega del Pozo

Tuesdays to Thursdays, from 10.30 am to 12.30 pm; from 3.30 to 5.30 pm (winter) and from 5.30 to 7.30 pm (summer)  
Fridays, Saturdays, Sundays and Public Holidays, from 10.30 am to 2 pm  
Fridays and Saturdays, from 3.30 pm to 5.30 pm (winter); from 5 pm to 7 pm (summer)

Closed during August.  
Entry ticket: 3 euros; free entry on Wednesdays without explanation

### Municipal Zoo

Tuesdays to Monday, from 11.30 am to 17.30 pm.  
Free entry

## VISITAS TURÍSTICAS POR LA CIUDAD GUIDED CITY TOURS



Proponemos descubrir Guadalajara acompañado por un guía turístico habilitado, visitando algunos de los monumentos más emblemáticos de la ciudad: el Palacio del Infantado, los Torreones de Álvar Fáñez y del Alamín, el Convento de la Piedad, el Palacio de la Cotilla, la Capilla de Luis de Lucena y la Iglesia y Cripta de San Francisco. La duración aproximada del recorrido es de dos horas y media.

### Fechas

Sábados, domingos y festivos, otras fechas consultar

### Salidas

11.30 h. desde la Oficina Municipal de Turismo, Plaza del Concejo, 11

### Precio

3 euros, incluida la Guadalajara Card

Gratis, los menores de 12 años y estudiantes y profesores que acrediten tal condición

Servicio de venta on-line disponible en [www.guadalajara.es](http://www.guadalajara.es)

We would like to suggest you take a tour of the city accompanied by an official tour guide. The visit includes some of the outstanding monuments of the city; the Palace of El Infantado, the Towers of Álvar Fáñez and of El Alamín, the Convent of La Piedad, the Palace of La Cotilla, the Chapel of Luis de Lucena, the Church and Crypt of San Francisco. The tour lasts approximately two and a half hours.

### Dates

Saturdays, Sundays and Public Holidays, consult for other dates

### Tour Times

11.30 am from the Tourism Municipal Office, in Plaza del Concejo, 11

### Tour Price

3 euros, which includes the cost of the Guadalajara Card

2 euros, for children under 12 and students with student ID

Online sales service available on [www.guadalajara.es](http://www.guadalajara.es)

